

NDUFC2 Antibody (C-term)
Affinity Purified Rabbit Polyclonal Antibody (Pab)
Catalog # AP10742b**Specification**

NDUFC2 Antibody (C-term) - Product Information

Application	WB, IHC-P,E
Primary Accession	O95298
Other Accession	NP_004540.1
Reactivity	Human
Host	Rabbit
Clonality	Polyclonal
Isotype	Rabbit IgG
Calculated MW	14188
Antigen Region	90-119

NDUFC2 Antibody (C-term) - Additional Information**Gene ID** 4718**Other Names**

NADH dehydrogenase [ubiquinone] 1 subunit C2, Complex I-B145b, CI-B145b, Human lung cancer oncogene 1 protein, HLC-1, NADH-ubiquinone oxidoreductase subunit B145b, NDUFC2

Target/Specificity

This NDUFC2 antibody is generated from rabbits immunized with a KLH conjugated synthetic peptide between 90-119 amino acids from the C-terminal region of human NDUFC2.

Dilution

WB~~1:1000

IHC-P~~1:50~100

E~~Use at an assay dependent concentration.

Format

Purified polyclonal antibody supplied in PBS with 0.09% (W/V) sodium azide. This antibody is purified through a protein A column, followed by peptide affinity purification.

Storage

Maintain refrigerated at 2-8°C for up to 2 weeks. For long term storage store at -20°C in small aliquots to prevent freeze-thaw cycles.

Precautions

NDUFC2 Antibody (C-term) is for research use only and not for use in diagnostic or therapeutic procedures.

NDUFC2 Antibody (C-term) - Protein Information**Name** NDUFC2 ([HGNC:7706](#))

Function Accessory subunit of the mitochondrial membrane respiratory chain NADH dehydrogenase (Complex I), that is believed not to be involved in catalysis but required for the complex assembly. Complex I functions in the transfer of electrons from NADH to the respiratory chain. The immediate electron acceptor for the enzyme is believed to be ubiquinone.

Cellular Location

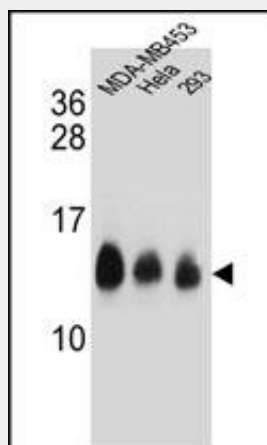
Mitochondrion inner membrane; Single-pass membrane protein; Matrix side

NDUFC2 Antibody (C-term) - Protocols

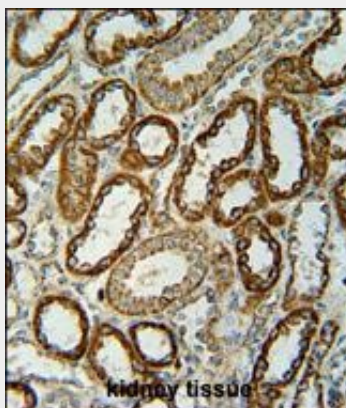
Provided below are standard protocols that you may find useful for product applications.

- [Western Blot](#)
- [Blocking Peptides](#)
- [Dot Blot](#)
- [Immunohistochemistry](#)
- [Immunofluorescence](#)
- [Immunoprecipitation](#)
- [Flow Cytometry](#)
- [Cell Culture](#)

NDUFC2 Antibody (C-term) - Images



NDUFC2 Antibody (C-term) (Cat. #AP10742b) western blot analysis in MDA-MB453, HeLa, 293 cell line lysates (35ug/lane). This demonstrates the NDUFC2 antibody detected the NDUFC2 protein (arrow).



NDUFC2 Antibody (C-term) (Cat. #AP10742b) immunohistochemistry analysis in formalin fixed and paraffin embedded human kidney tissue followed by peroxidase conjugation of the secondary antibody and DAB staining. This data demonstrates the use of the NDUFC2 Antibody (C-term) for immunohistochemistry. Clinical relevance has not been evaluated.

NDUFC2 Antibody (C-term) - Background

Accessory subunit of the mitochondrial membrane respiratory chain NADH dehydrogenase (Complex I), that is believed not to be involved in catalysis. Complex I functions in the transfer of electrons from NADH to the respiratory chain. The immediate electron acceptor for the enzyme is believed to be ubiquinone.

NDUFC2 Antibody (C-term) - References

Bailey, S.D., et al. Diabetes Care 33(10):2250-2253(2010)
Talmud, P.J., et al. Am. J. Hum. Genet. 85(5):628-642(2009)
Wheeler, H.E., et al. PLoS Genet. 5 (10), E1000685 (2009) :
Wang, L., et al. Cancer Epidemiol. Biomarkers Prev. 17(12):3558-3566(2008)
Starr, J.M., et al. Mech. Ageing Dev. 129(12):745-751(2008)